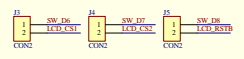
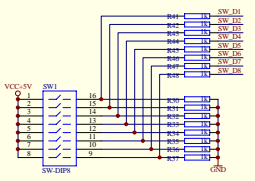
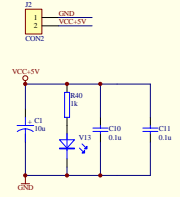
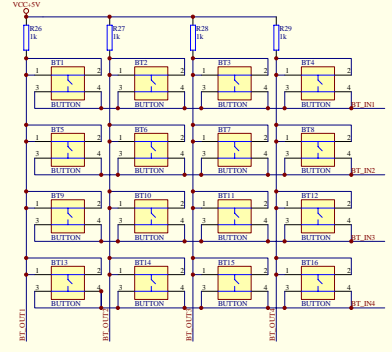
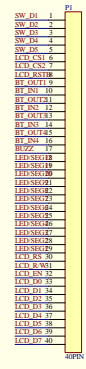
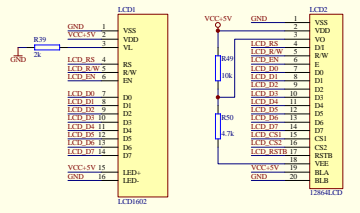
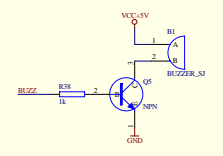


模块说明：1. 连接控制PCA控制4个成组管
2. 连接控制PCA控制12个LED管



模块说明：当物理大按键时，需要接上上拉电阻
不使用大按键时，上拉电阻接法可以参考使用按钮开关的图



Title		
Size	Number	Revision
C	1-16-2010	
Date	1-16-2010	Sheet of
File	LED驱动板.dwg	Drawn By